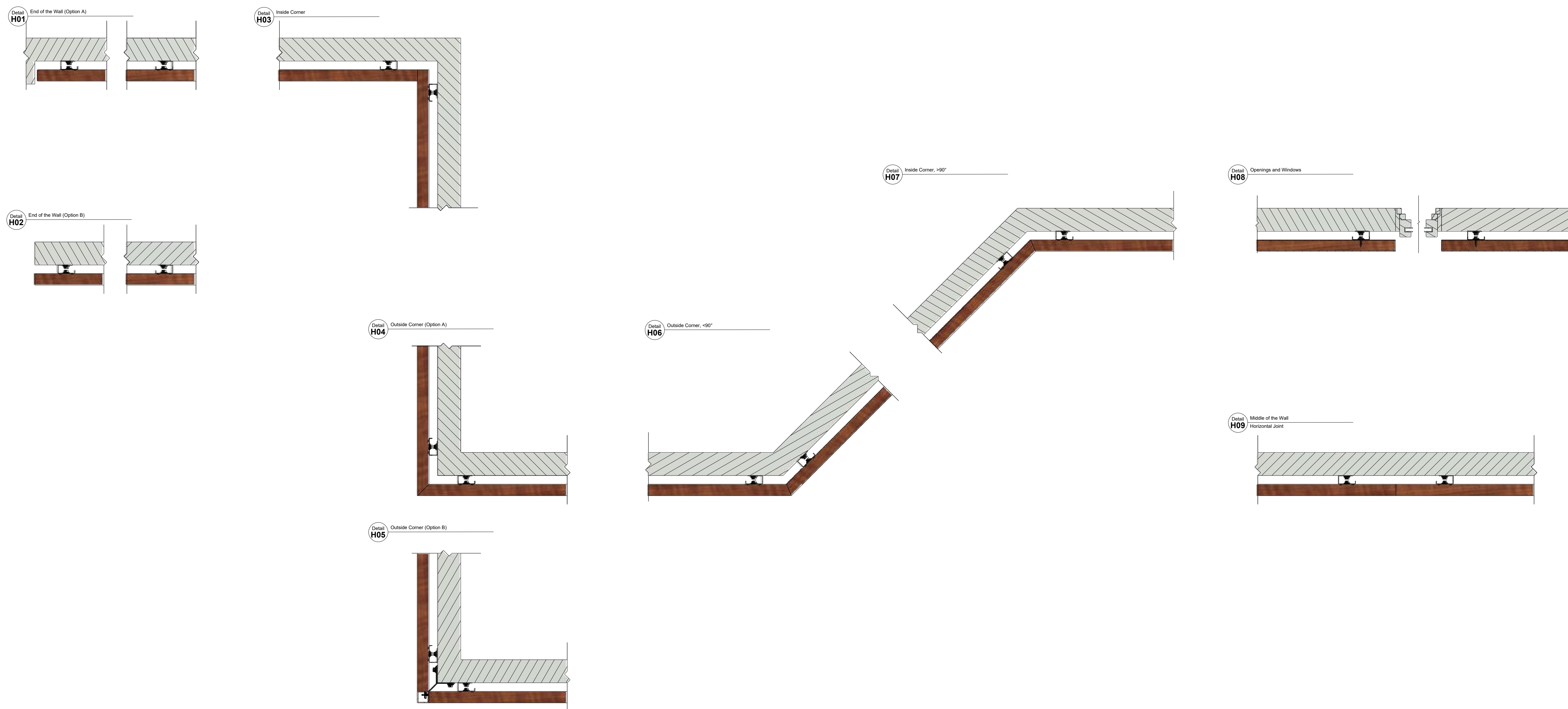


## WALL DETAILS INDEX: HORIZONTAL SECTIONS

HORIZONTAL BATTEN INSTALLATION  
SCALE 1:5

\*For external wall applications, ensure the wall is adequately protected with a moisture barrier before installing the AL13 Batten System.



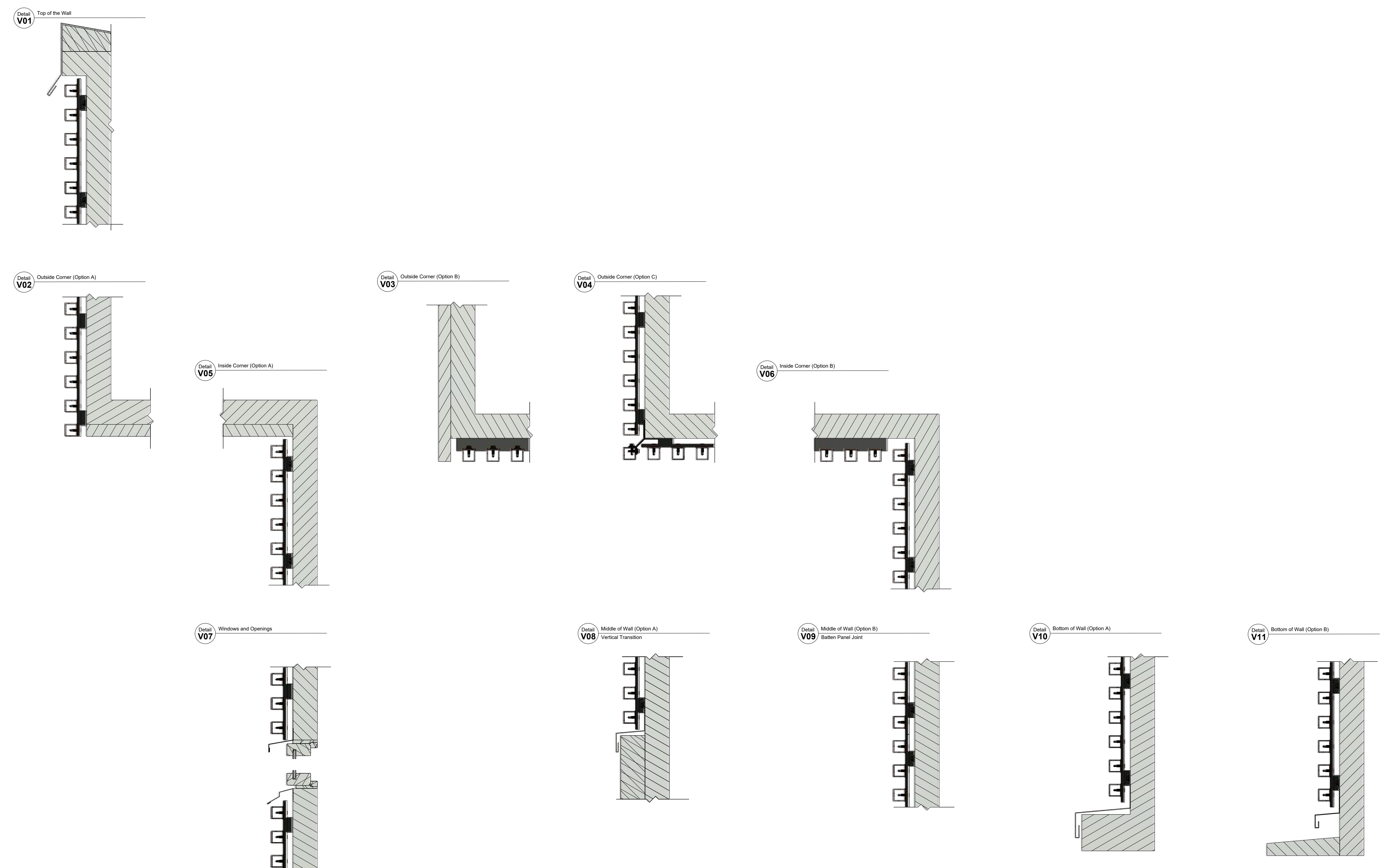
1278 Cliveden Ave  
Delta, BC  
V3M 6G4  
Canada

Tel: +1-604-428-2513  
Mail: info@al13.com  
URL: al13.com

## WALL DETAILS INDEX: VERTICAL SECTIONS

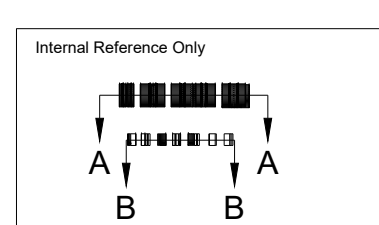
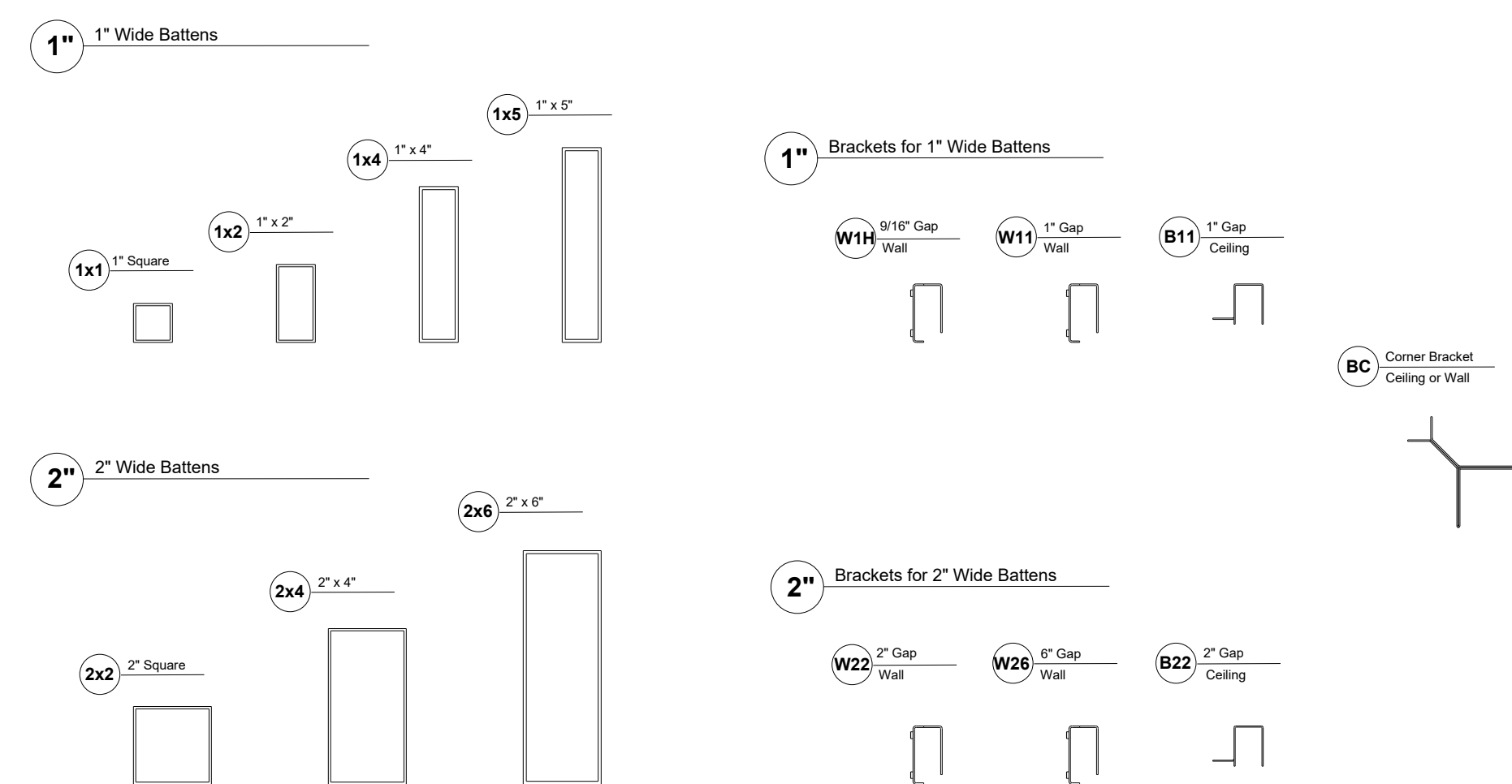
HORIZONTAL BATTEN INSTALLATION  
SCALE 1:5

\*For external wall applications, ensure the wall is adequately protected with a moisture barrier before installing the AL13 Batten System.



## BATTEN SECTIONS AND BRACKETS

SCALE 1:4  
Batten width matches the appropriate bracket, available with different gaps between battens. Note OC = Spacing between battens is the Gap + Batten Width.

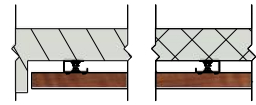


# WALL DETAILS INDEX: HORIZONTAL SECTIONS

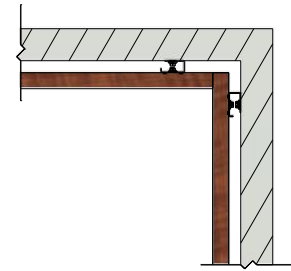
## HORIZONTAL BATTEN INSTALLATION

\*For external wall applications, ensure the wall is adequately protected with a moisture barrier before installing the AL13 Batten System.

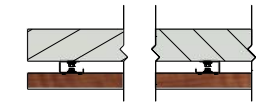
Detail H01  
End of the Wall (Opt A)  
P.01



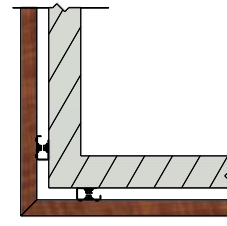
Detail H03  
Inside Corner  
P.02



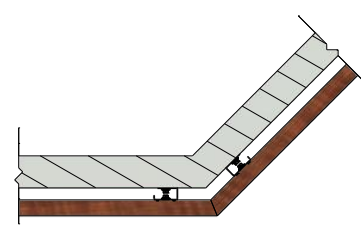
Detail H02  
End of the Wall (Opt B)  
P.01



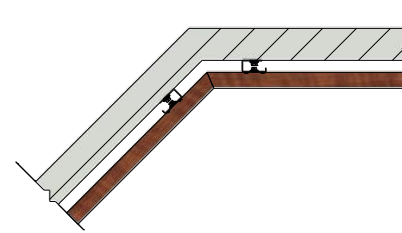
Detail H04  
Outside Corner  
P.03



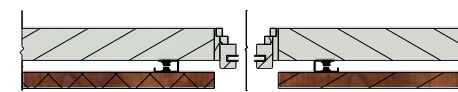
Detail H06  
Outside Corner, <math>< 90^\circ</math>  
P.04



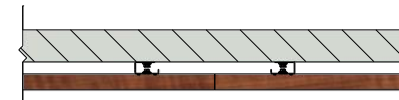
Detail H07  
Inside Corner, >math>> 90^\circ</math>  
P.05



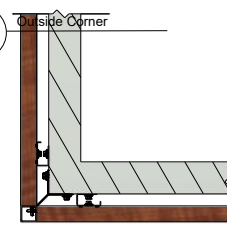
Detail H08  
Openings and Windows  
P.06



Detail H09  
Middle of the Wall  
Horizontal Joint  
P.07



Detail H05  
Outside Corner  
P.03



**NOTE:**

The contractor / builder must verify all dimensions on the job and report any discrepancy to the designer before proceeding with the work. All drawings and specifications are instruments of service and the copyright property of the designer and must be returned upon request.

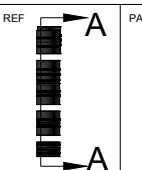
**AL13® Batten System Details**  
**Batten System Horizontal Installation**

DESCRIPTION

Generic Details  
Horizontal Sections

SCALE  
1:12

VERSION  
DEC 2022

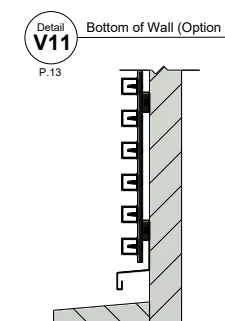
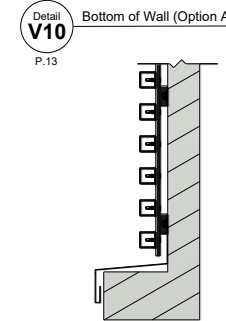
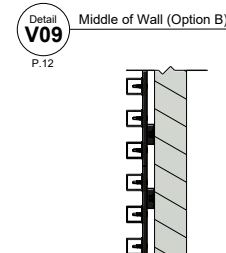
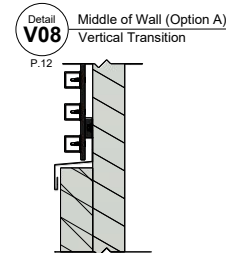
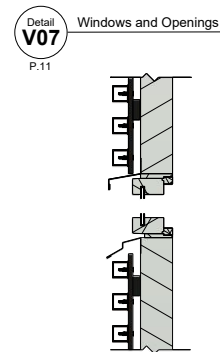
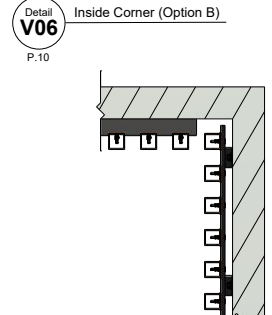
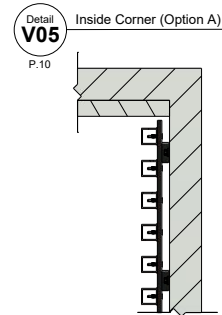
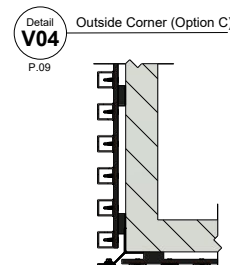
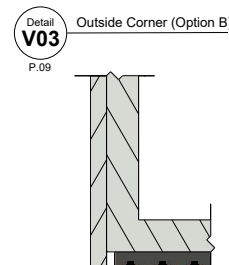
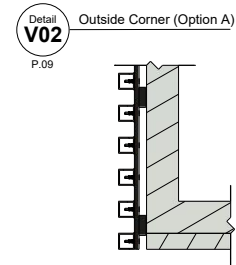
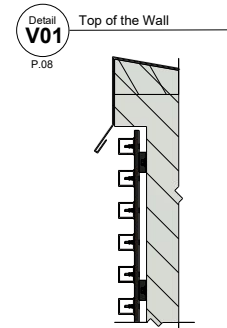


PAGE #  
A

# WALL DETAILS INDEX: VERTICAL SECTIONS

## HORIZONTAL BATTEN INSTALLATION

\*For external wall applications, ensure the wall is adequately protected with a moisture barrier before installing the AL13 Batten System.



1278 Cliveden Avenue  
Delta, BC V3M 6G4  
Canada

Tel: +1-604-428-2513  
Mail: info@al13.com  
URL: al13.com

### NOTE:

The contractor / builder must verify all dimensions on the job and report any discrepancy to the designer before proceeding with the work. All drawings and specifications are instruments of service and the copyright property of the designer and must be returned upon request.

AL13® Batten System Details  
Batten System Horizontal Installation

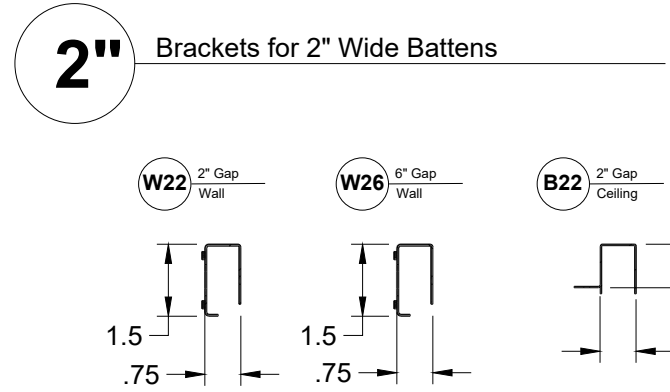
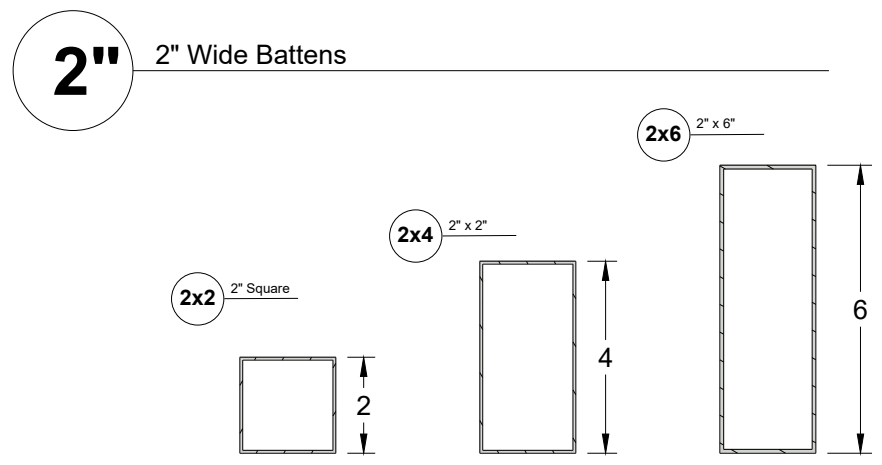
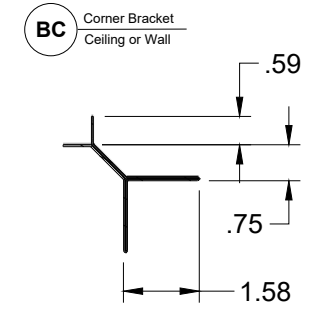
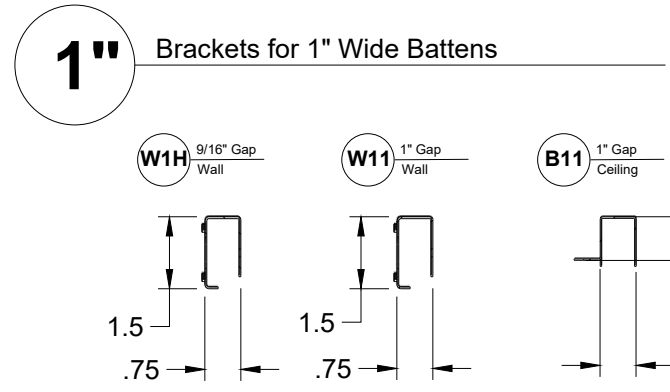
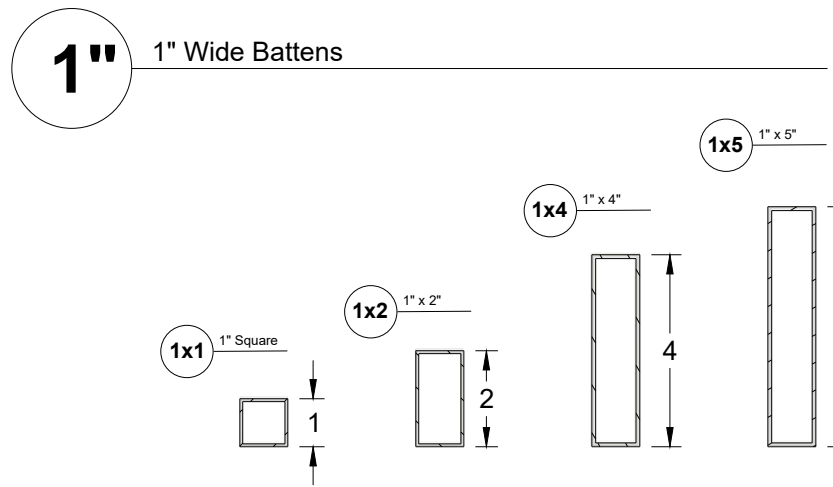
### DESCRIPTION

Generic Details  
Vertical Sections

SCALE	REF	PAGE #
1:12	A	B
VERSION		
DEC 2022		

# BATTEN SECTIONS AND BRACKETS

Batten width matches the appropriate bracket, available with different gaps between battens. Note OC Spacing between battens is the Gap + Batten Width.



**NOTE:**  
The contractor / builder must verify all dimensions on the job and report any discrepancy to the designer before proceeding with the work. All drawings and specifications are instruments of service and the copyright property of the designer and must be returned upon request.

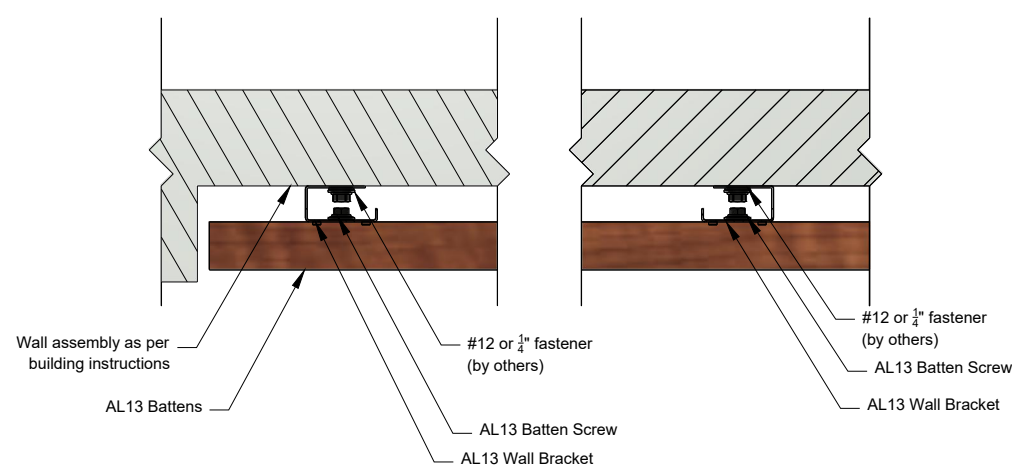
AL13® Batten System Details  
Batten System Horizontal Installation

DESCRIPTION  
  
BATTEN SECTIONS  
WALL BRACKETS  
CEILING BRACKETS

SCALE	REF	PAGE #
1:4	A	C
VERSION		
DEC 2022		

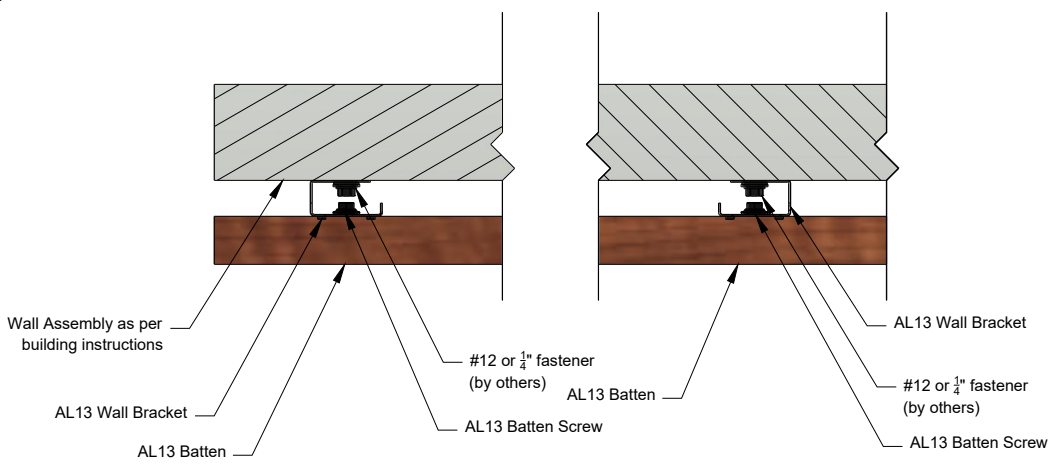
Detail  
**H01**

End of the Wall (Option A)



Detail  
**H02**

End of the Wall (Option B)



NOTE:

The contractor / builder must verify all dimensions on the job and report any discrepancy to the designer before proceeding with the work. All drawings and specifications are instruments of service and the copyright property of the designer and must be returned upon request.

AL13® Batten System Details  
Batten System Horizontal Installation

DESCRIPTION

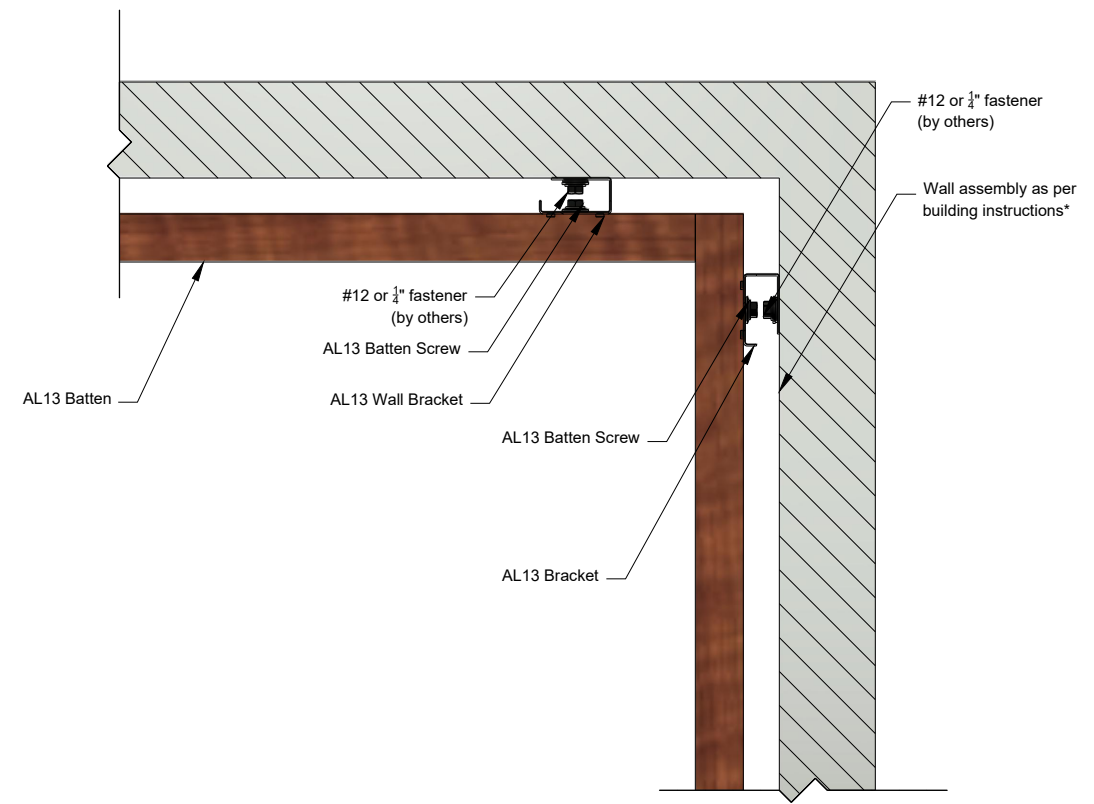
GENERIC DETAIL  
HORIZONTAL SECTION  
END OF THE WALL

\*For external wall applications, ensure the wall is adequately protected with a moisture barrier before installing the AL13 Batten System.

SCALE	REF	PAGE #
1:4		01
VERSION		
DEC 2022		

Detail  
**H03**

Inside Corner



**NOTE:**

The contractor / builder must verify all dimensions on the job and report any discrepancy to the designer before proceeding with the work. All drawings and specifications are instruments of service and the copyright property of the designer and must be returned upon request.

**AL13® Batten System Details**  
**Batten System Horizontal Installation**

DESCRIPTION

**GENERIC DETAIL  
HORIZONTAL SECTION  
INSIDE CORNER**

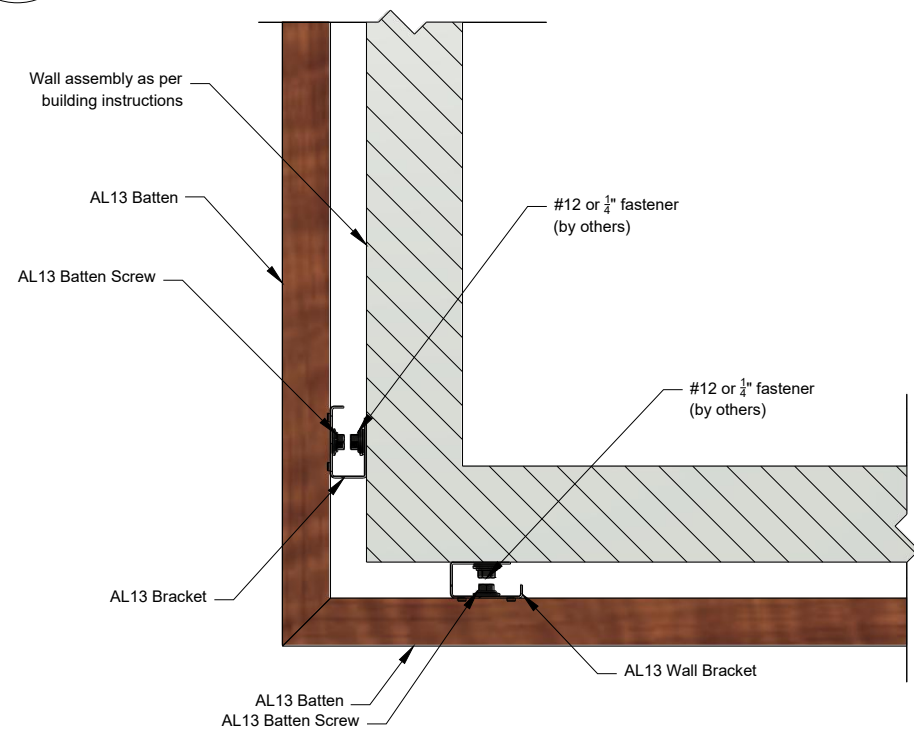
\*For external wall applications, ensure the wall is adequately protected with a moisture barrier before installing the AL13 Batten System.

SCALE	REF	PAGE #
1:4		
VERSION		
DEC 2022		



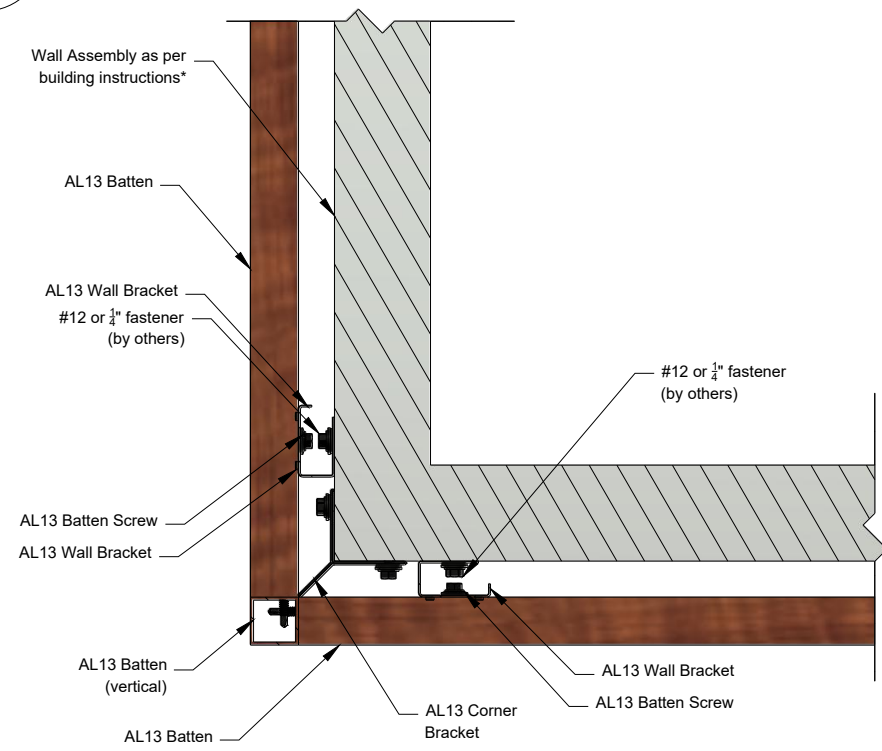

Detail  
**H04**

Outside Corner (Option A)



Detail  
**H05**

Outside Corner (Option B)



\*For external wall applications, ensure the wall is adequately protected with a moisture barrier before installing the AL13 Batten System.

NOTE:

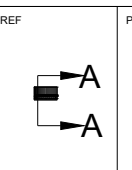
The contractor / builder must verify all dimensions on the job and report any discrepancy to the designer before proceeding with the work. All drawings and specifications are instruments of service and the copyright property of the designer and must be returned upon request.

AL13® Batten System Details  
Batten System Horizontal Installation

DESCRIPTION

GENERIC DETAIL  
HORIZONTAL SECTION  
OUTSIDE CORNER

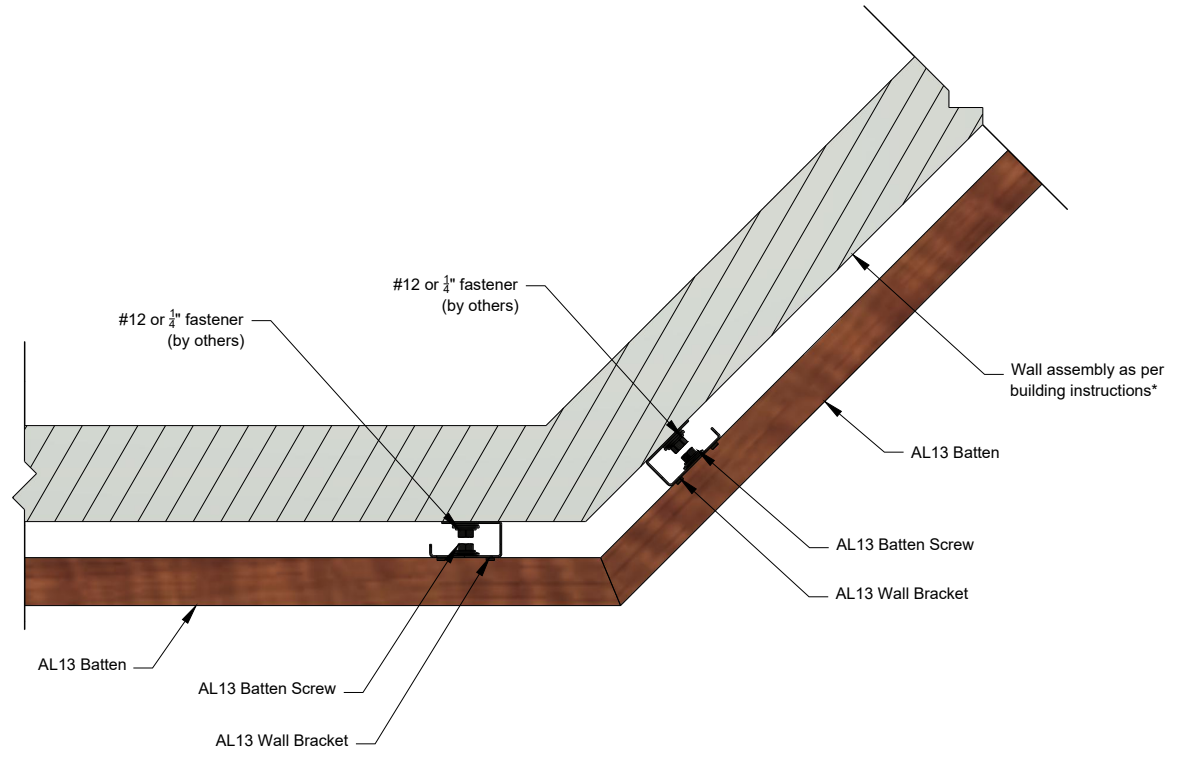
SCALE	REF	PAGE #
1:4		03
VERSION		
DEC 2022		



03

Detail  
**H06**

Outside Corner, <90°



**NOTE:**

The contractor / builder must verify all dimensions on the job and report any discrepancy to the designer before proceeding with the work. All drawings and specifications are instruments of service and the copyright property of the designer and must be returned upon request.

**AL13® Batten System Details**  
**Batten System Horizontal Installation**

DESCRIPTION

**GENERIC DETAIL**  
**HORIZONTAL SECTION**  
**OUTSIDE CORNER <90°**

SCALE  
**1:4**

REF

PAGE #

VERSION  
DEC 2022



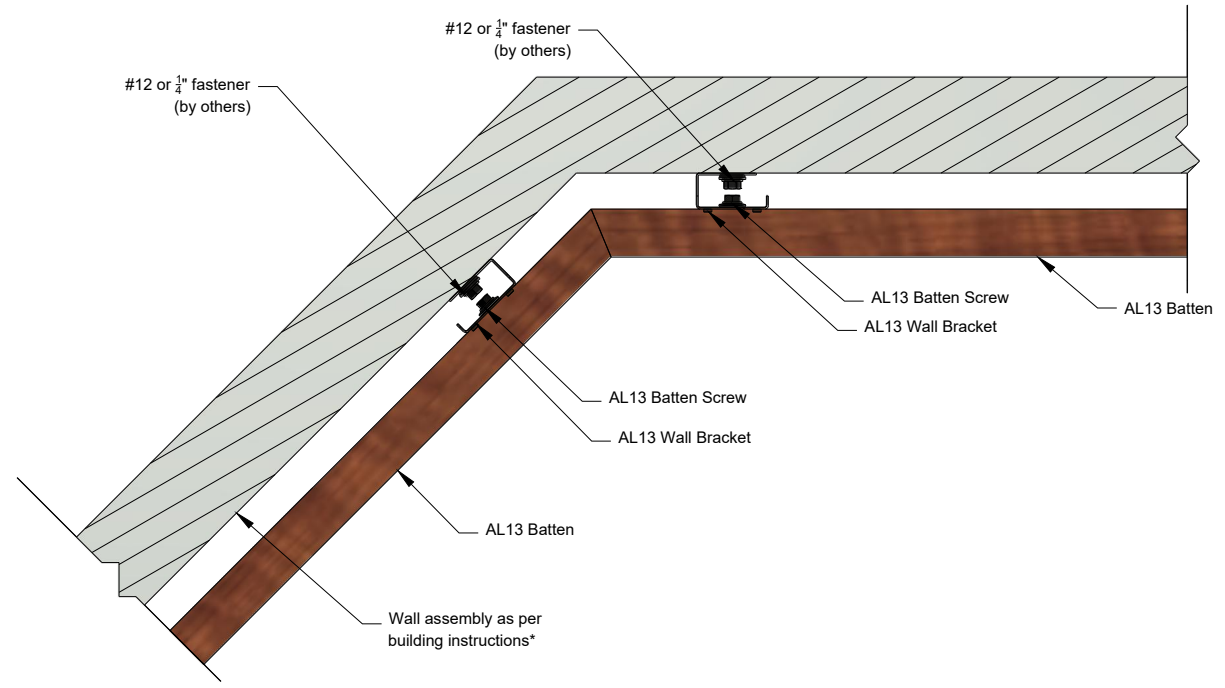
**04**

\*For external wall applications, ensure the wall is adequately protected with a moisture barrier before installing the AL13 Batten System.



Detail  
**H07**

Inside Corner, >90°



**NOTE:**

The contractor / builder must verify all dimensions on the job and report any discrepancy to the designer before proceeding with the work. All drawings and specifications are instruments of service and the copyright property of the designer and must be returned upon request.

**AL13® Batten System Details**  
**Batten System Horizontal Installation**

DESCRIPTION

**GENERIC DETAIL  
HORIZONTAL SECTION  
INSIDE CORNER  
>90°**

\*For external wall applications, ensure the wall is adequately protected with a moisture barrier before installing the AL13 Batten System.

SCALE  
**1:4**

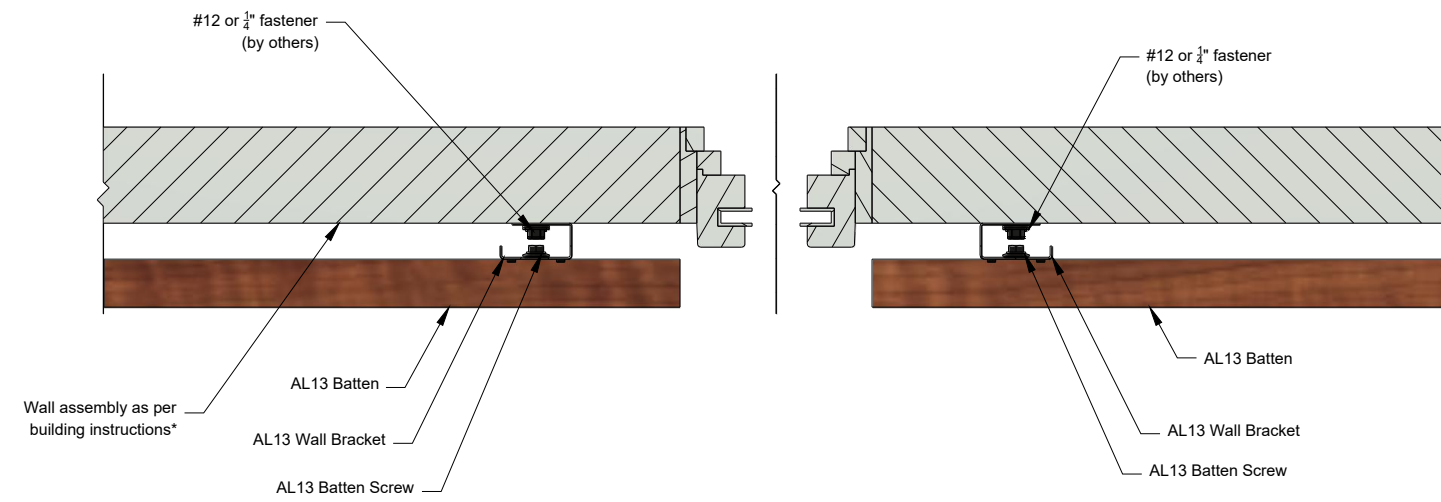
REF

PAGE #  
**05**

VERSION  
DEC 2022

Detail  
**H08**

Openings and Windows



**NOTE:**

The contractor / builder must verify all dimensions on the job and report any discrepancy to the designer before proceeding with the work. All drawings and specifications are instruments of service and the copyright property of the designer and must be returned upon request.

**AL13® Batten System Details**  
**Batten System Horizontal Installation**

DESCRIPTION

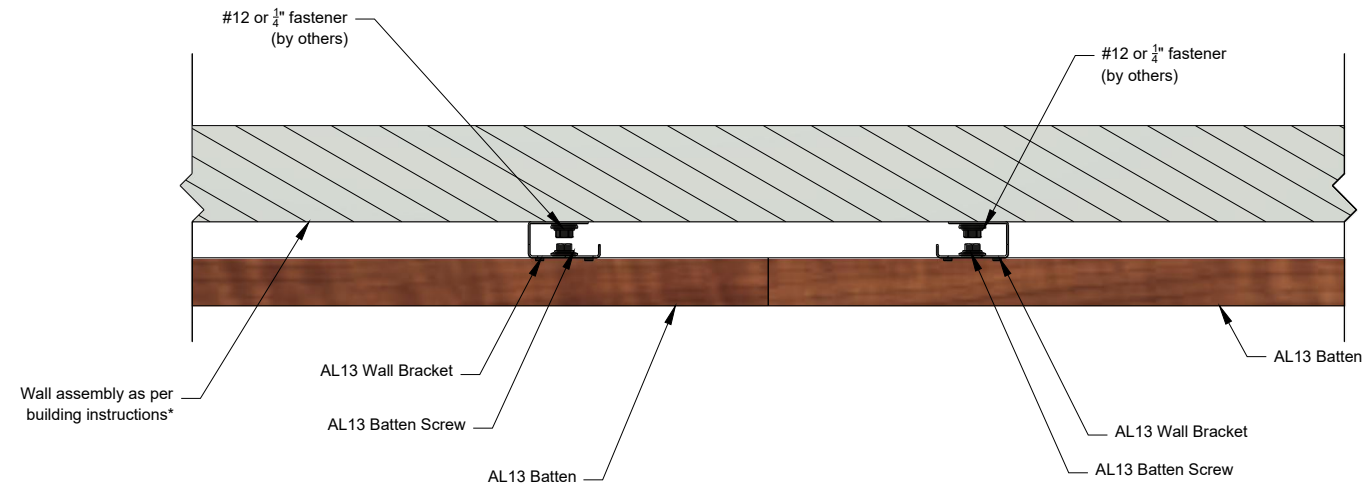
**GENERIC DETAIL  
HORIZONTAL SECTION  
OPENINGS AND WINDOWS**

\*For external wall applications, ensure the wall is adequately protected with a moisture barrier before installing the AL13 Batten System.

SCALE	REF	PAGE #
1:4		06
VERSION		
DEC 2022		

Detail  
**H09**

Middle of the Wall



**NOTE:**

The contractor / builder must verify all dimensions on the job and report any discrepancy to the designer before proceeding with the work. All drawings and specifications are instruments of service and the copyright property of the designer and must be returned upon request.

**AL13® Batten System Details**  
**Batten System Horizontal Installation**

DESCRIPTION

**GENERIC DETAIL  
HORIZONTAL  
SECTION**

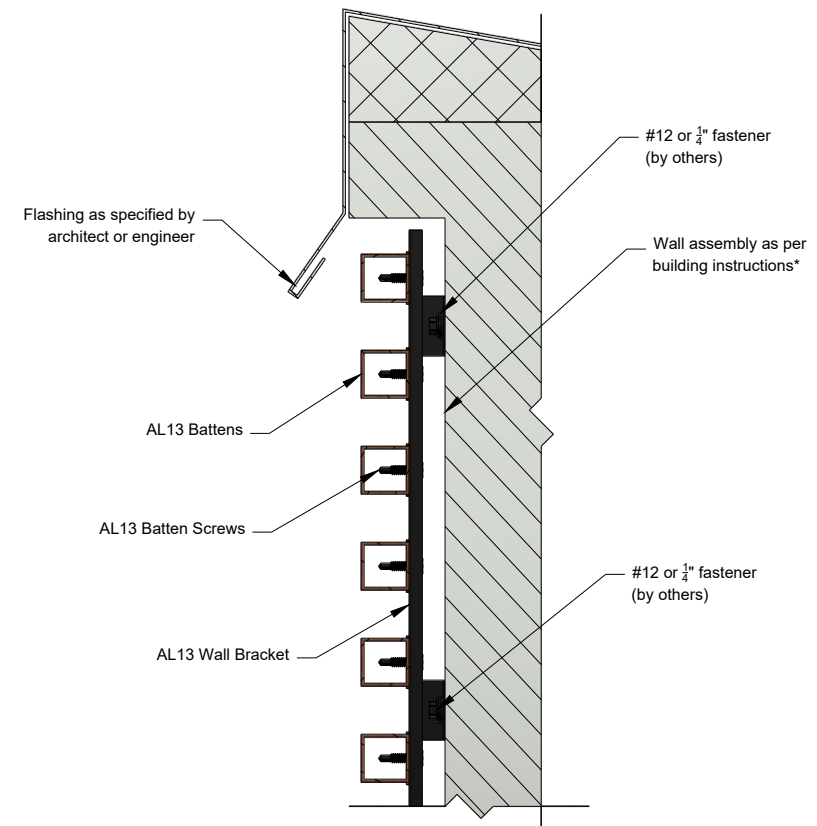
**MIDDLE OF THE WALL**

\*For external wall applications, ensure the wall is adequately protected with a moisture barrier before installing the AL13 Batten System.

SCALE	REF	PAGE #
1:4		06
VERSION		
DEC 2022		

Detail  
**V01**

Top of the Wall



NOTE:

The contractor / builder must verify all dimensions on the job and report any discrepancy to the designer before proceeding with the work. All drawings and specifications are instruments of service and the copyright property of the designer and must be returned upon request.

AL13® Batten System Details  
Batten System Horizontal Installation

DESCRIPTION

GENERIC DETAIL  
VERTICAL SECTION  
TOP OF THE WALL

\*For external wall applications, ensure the wall is adequately protected with a moisture barrier before installing the AL13 Batten System.

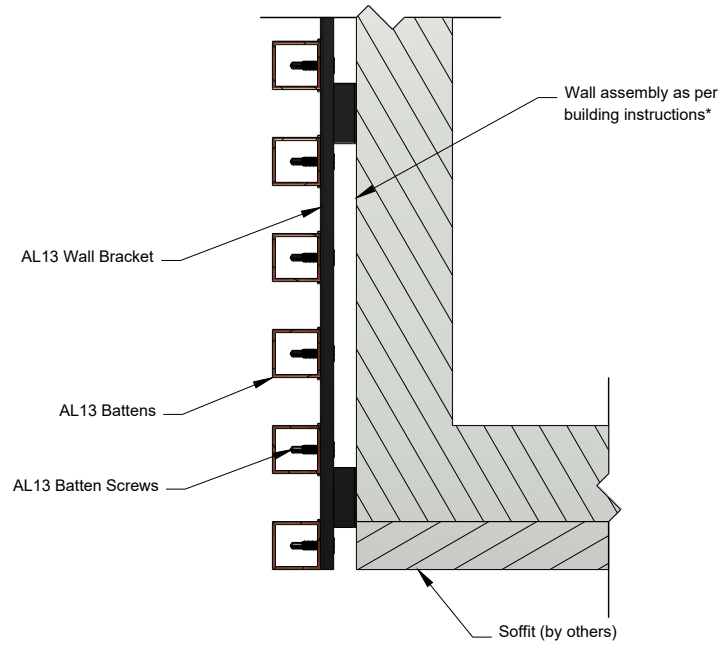
SCALE  
1:4

REF  
A  
A

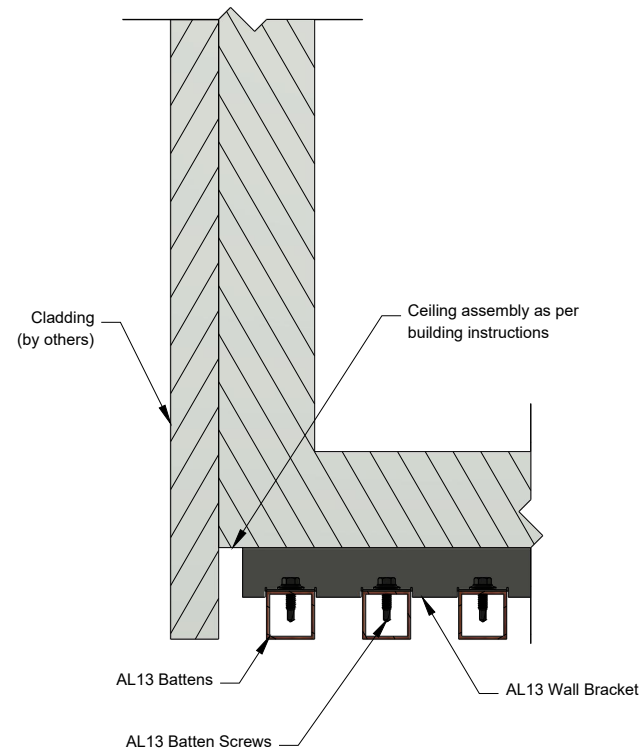
PAGE #  
08

VERSION  
DEC 2022

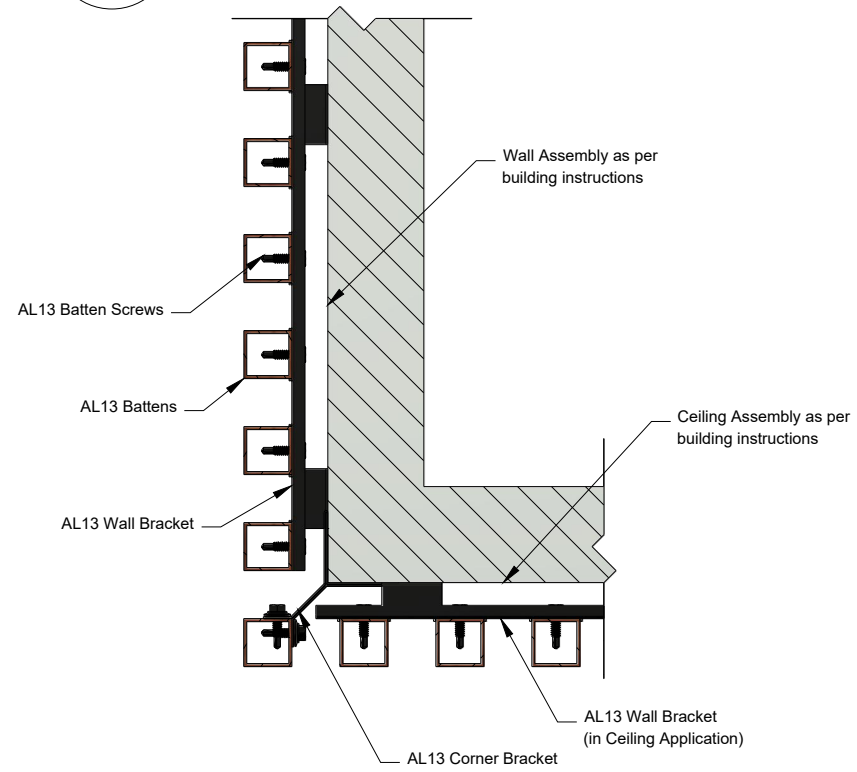
Detail **V02** Outside Corner (Option A)



Detail **V03** Outside Corner (Option B)



Detail **V04** Outside Corner (Option C)



**NOTE:**

The contractor / builder must verify all dimensions on the job and report any discrepancy to the designer before proceeding with the work. All drawings and specifications are instruments of service and the copyright property of the designer and must be returned upon request.

**AL13® Batten System Details**  
**Batten System Horizontal Installation**

**DESCRIPTION**

**GENERIC DETAIL**  
**VERTICAL SECTION**  
**OUTSIDE CORNER**

\*For external wall applications, ensure the wall is adequately protected with a moisture barrier before installing the AL13 Batten System.

SCALE  
**1:4**

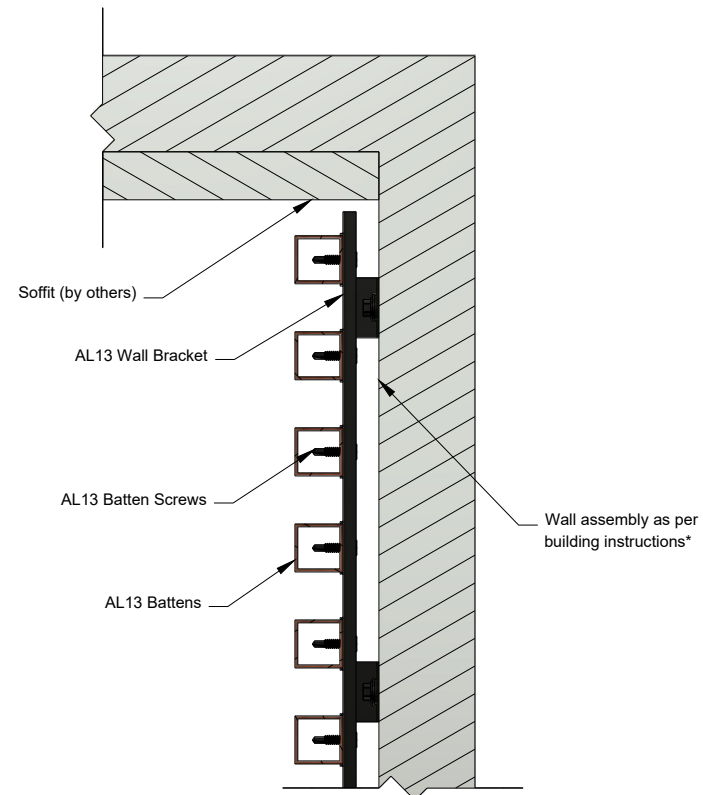
REF  
A  
A  
B  
B

PAGE #  
**09**

VERSION  
DEC 2022

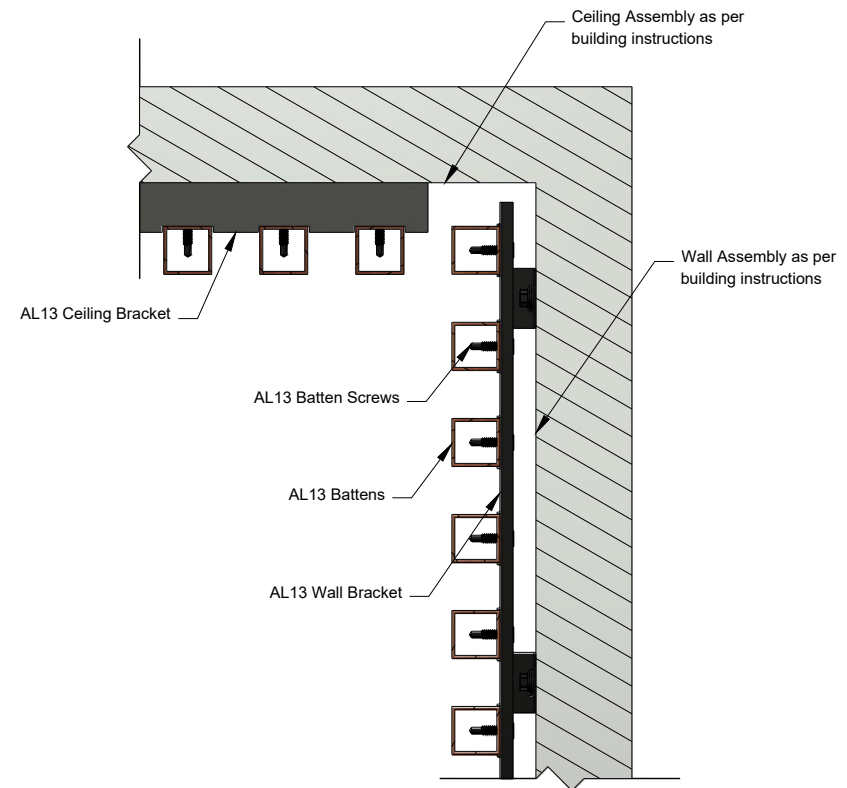
Detail  
**V05**

Inside Corner (Option A)



Detail  
**V06**

Inside Corner (Option B)



NOTE:

The contractor / builder must verify all dimensions on the job and report any discrepancy to the designer before proceeding with the work. All drawings and specifications are instruments of service and the copyright property of the designer and must be returned upon request.

AL13® Batten System Details  
Batten System Horizontal Installation

DESCRIPTION

GENERIC DETAIL  
VERTICAL SECTION  
INSIDE CORNER

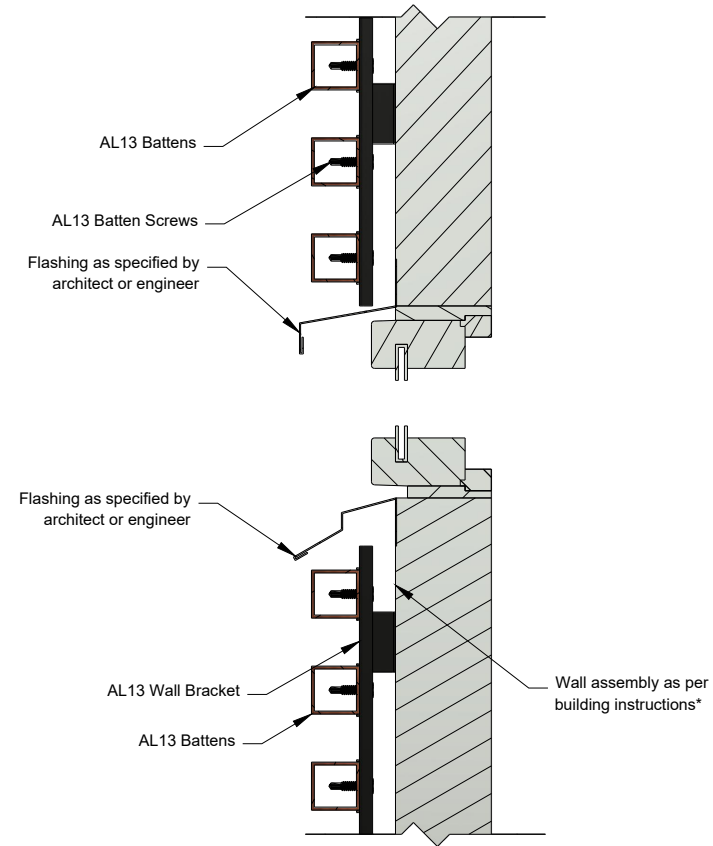
\*For external wall applications, ensure the wall is adequately protected with a moisture barrier before installing the AL13 Batten System.

SCALE	REF	PAGE #
1:4		10
VERSION		
DEC 2022		



Detail  
**V07**

Windows and Openings



**NOTE:**

The contractor / builder must verify all dimensions on the job and report any discrepancy to the designer before proceeding with the work. All drawings and specifications are instruments of service and the copyright property of the designer and must be returned upon request.

**AL13® Batten System Details**  
**Batten System Horizontal Installation**

DESCRIPTION

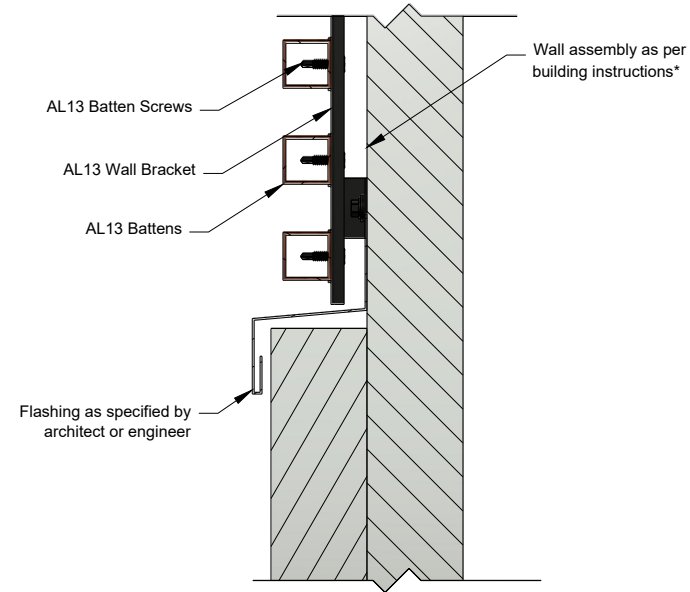
**GENERIC DETAIL  
VERTICAL SECTION  
WINDOWS AND OPENINGS**

\*For external wall applications, ensure the wall is adequately protected with a moisture barrier before installing the AL13 Batten System.

SCALE	REF	PAGE #
1:4		11
VERSION		
DEC 2022		

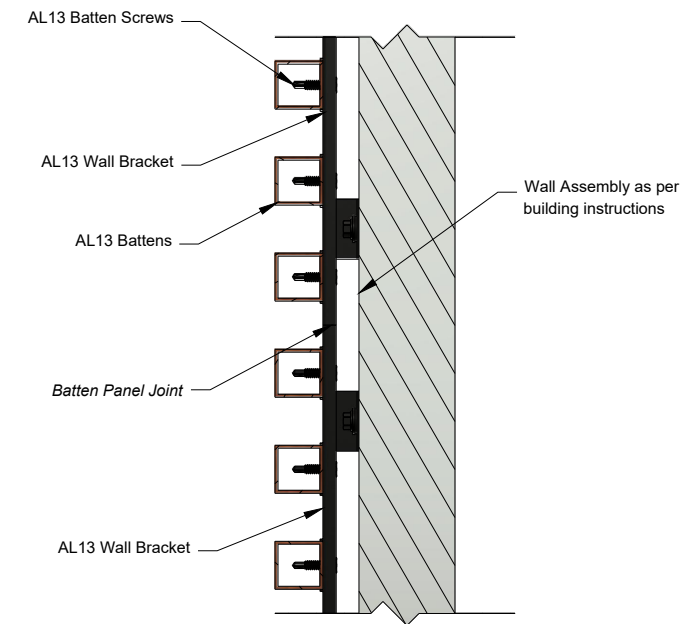
Detail  
**V08**

Middle of the Wall (Option A)



Detail  
**V09**

Middle of the Wall (Option B)  
Batten Panel Joint



NOTE:

The contractor / builder must verify all dimensions on the job and report any discrepancy to the designer before proceeding with the work. All drawings and specifications are instruments of service and the copyright property of the designer and must be returned upon request.

AL13® Batten System Details  
Batten System Horizontal Installation

DESCRIPTION

GENERIC DETAIL  
VERTICAL SECTION  
MIDDLE OF THE WALL

\*For external wall applications, ensure the wall is adequately protected with a moisture barrier before installing the AL13 Batten System.

SCALE  
1:4

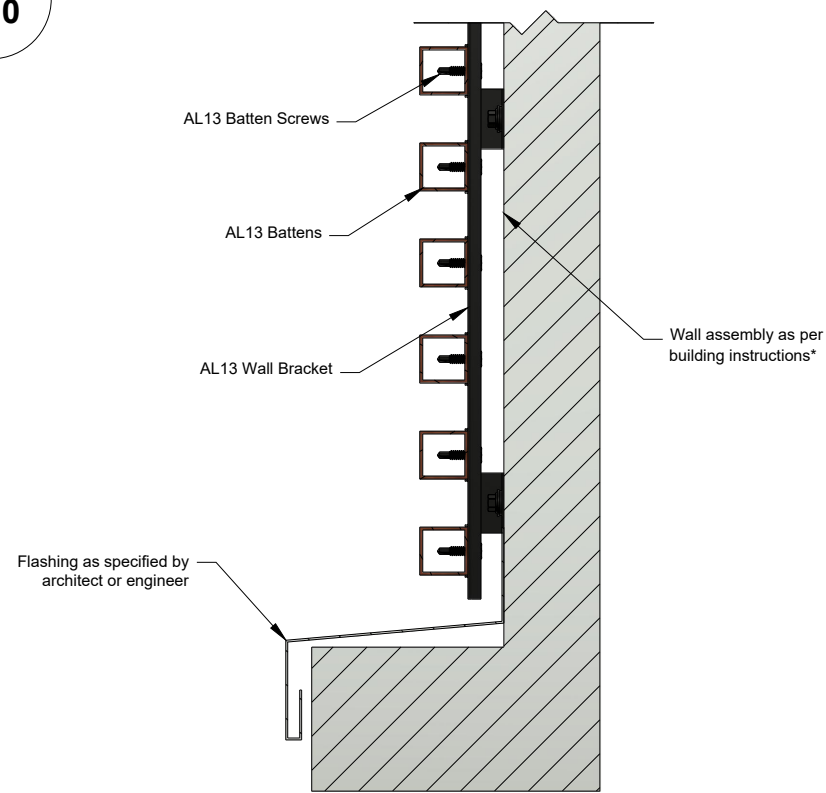
REF  
A  
A  
B  
B

PAGE #

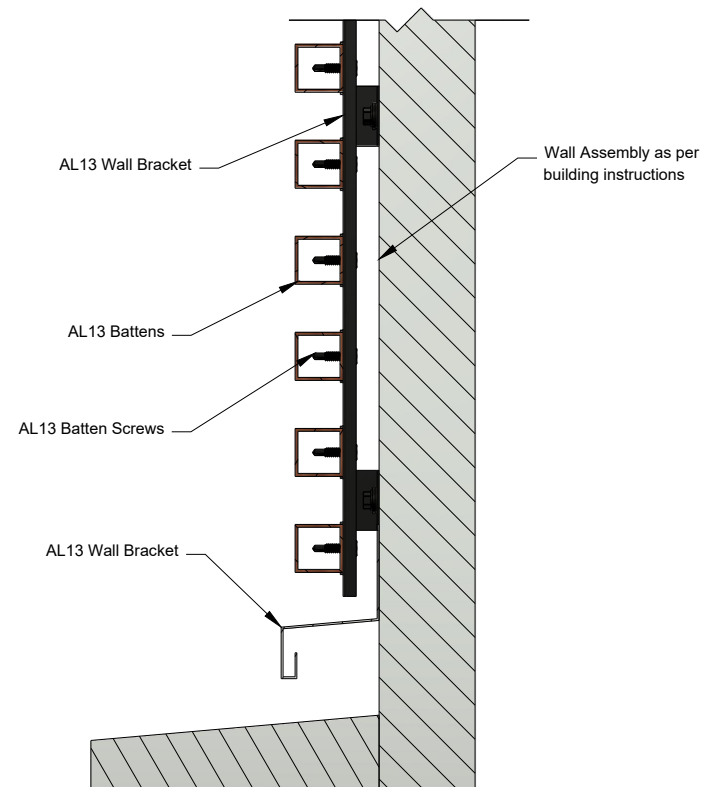
12

VERSION  
DEC 2022

Detail **V10** Bottom of the Wall (Option A)



Detail **V11** Bottom of the Wall (Option B)



\*For external wall applications, ensure the wall is adequately protected with a moisture barrier before installing the AL13 Batten System.

**NOTE:**

The contractor / builder must verify all dimensions on the job and report any discrepancy to the designer before proceeding with the work. All drawings and specifications are instruments of service and the copyright property of the designer and must be returned upon request.

**AL13® Batten System Details**  
**Batten System Horizontal Installation**

DESCRIPTION

**GENERIC DETAIL**  
**VERTICAL SECTION**  
**MIDDLE OF THE WALL**

SCALE  
**1:4**

REF  
  
**A-A**  
**B-B**

PAGE #  
**12**

VERSION  
DEC 2022